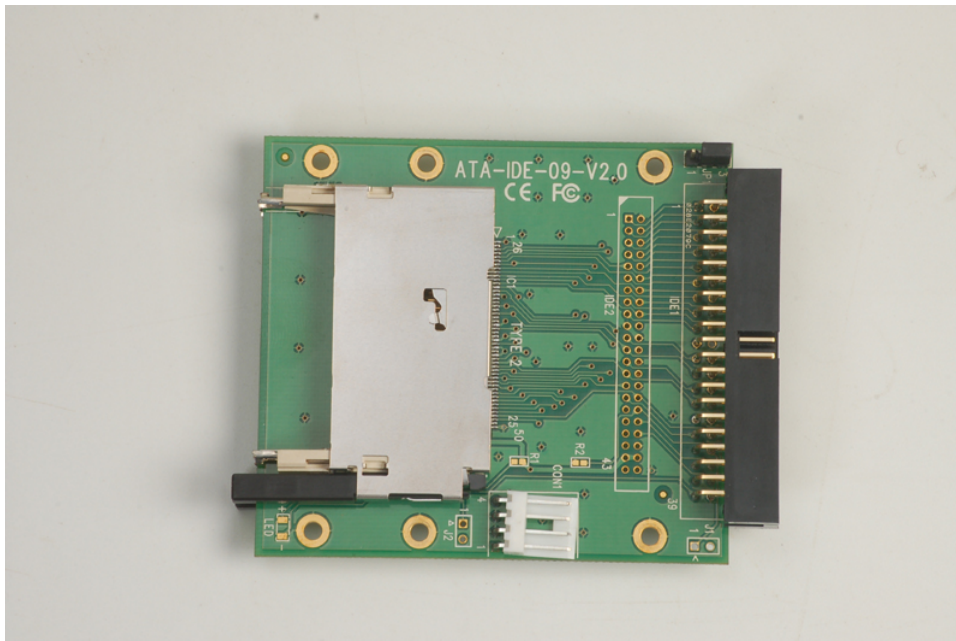


Model no. C.M.-IDE-822CF/B

Features:

1. 2.5" form factor
2. 2 Compact Flash slots
3. Supports Compact Flash Type I /II (Micro Drive)
4. Optional 40 pins IDE 90° connector and 4 pins power connectors
5. Dimensions: 81.7mm x 70mm
6. Master/Slave optional
7. Support DMA mode
8. Designed with **ejector** for both side.

Up side of C.M.IDE-822CF/B



Down side of C.M.IDE-822CF/B

